



Works with ALL IP,
digital, and analog cameras!

IP-Video Surveillance Solutions

*Easily View & Manage
Live & Recorded Video*



FEATURES & BENEFITS

End User Features

- **Remote Viewing**—View real-time cameras and recorded footage from anywhere using standard Internet Explorer web browser
- **Simultaneous Camera Viewing**—View up to 16 real-time cameras on your screen at a time
- **Virtual VCR**—use familiar VCR-like controls to play, fast forward, rewind, frame forward, frame backward, etc.
- **Variable Image Size & Quality**—Adjust image compression and video compression sizing to optimize quality or size
- **2-Way Audio**—Uses standards-based voice-over-IP systems to send and receive audio or enable one- or two-way conversations
- **Alarm Tracking**—Get visual, audio, and/or e-mail notification when camera alarm detected because of motion or connection down
- **Online Video Training & Help Documentation**—Get up to speed quickly with online video training and reference information in linked help documents
- **Video Zoom Control**—Digitally zoom in/out to get a closer look at specific areas of your video
- **Video Date Sorting**—Video archives automatically sort into date folders to make searching easy
- **Download**—save video directly to your computer or CD for backup or email
- **Print Images**—Print images with camera name, time/date stamp, and user comment

Video Recording Features

- **Intelligent Video Recording**—Filter images based on motion sensitivity, specific events (e.g., access card reader), or a schedule to minimize the amount of storage required
- **Advanced Video Motion Detection (A-VMD)**—Provides noise control and the ability to exclude specific areas of your camera image from motion detection
- **Choose from 5 Recording Methods**—
 1. **Manual Recording**—triggered through web camera client interface
 2. **Hardware Motion Recording**—triggered by physical motion detector or contact closure wired directly to camera hardware or connected via network
 3. **Software Motion Recording**—server analyzes buffered images records when it detects motion
 4. **Scheduled Recording***—set daily, weekly, monthly times to record using visual scheduling calendar
 5. **Continuous Recording***—24/7 recording

*Note: We recommend that scheduled and continuous recording be combined with hardware and/or software motion recording to limit the amount of video stored to only video with motion. This helps to keep only the important video in the archive, as well as minimize storage space and time spent reviewing video.

System Administration Features

- **Remote Configuration**—Configure all your servers from any Windows 2000 or XP machine (e.g., add cameras, change properties, configure users)
- **Enterprise Management**—Automated tools for alarm tracking, administering user security levels, user

information database, and remote configuration (including import/export and templates for reusing configurations and system backups)

- **Automatic Archiving**—Set up daily video and image database archiving
- **Password Protection**—Separate administrator and user authentications and interfaces improve simplicity and security
- **Camera Connection Watchdog**—Periodically checks connection with camera at specified intervals to ensure camera is accessible; optionally trigger an alarm and email notifications if cannot connect
- **Alarm Triggers**—set motion or disconnect alarms to notify you via email, phone, PDA, and/or GSM-SMS
- **Event Log**—automated logging of all events detected and performed by system

Networking Features

- **Universal Camera Support**—Supports all IP-based network and web cameras and camera servers, plus CCTV cameras using optional digital encoders; cameras currently supported include Axis, Mobotix, IQEye, Pixord, Panasonic, Sony, JVC, Samsung, Baxall, Boser, Canon, DLink, FlexCamera, EarthCam, Hawking, Intellinet Active, Nikon, Veo, VivoTek, WebEye, and LeadTek
- **Universal Server Support**—Software resides on any standard network server running Linux
- **Internet-Safe SSL Encryption**—Uses state-of-the-art SSL encryption to guarantee your data is protected
- **Minimized Disk Caching**—Pre-buffered images are stored in memory waiting for motion until they are written to disk; helps prevent disk corruption due to overuse



8320 Old Courthouse Road, 2nd Floor
Vienna, Virginia 22182
703.903.0227 main ■ 703.749.5326 fax
sales@videonext.com
www.videonext.com

EASILY VIEW & MANAGE SURVEILLANCE VIDEO



View up to 16 cameras simultaneously via the Internet Explorer-based interface.

Today's IP-based surveillance systems use digital IP cameras—as opposed to analog closed-circuit cameras—and piggyback video on your existing data network. Your surveillance system is just another service running over your existing IT infrastructure, so you don't need a separate CCTV network. With the elimination of videotape, however, you need a simple way to view and manage your surveillance video.

As the brains behind these new IP-based surveillance systems, videoNEXT provides a simple, seamless interface to view and manage all of your cameras and recorded video from anywhere on your network or the Internet.

Simple, Seamless Interface

The videoNEXT software resides on a standard network server and manages video from all of your cameras, storing it on the server or network-attached storage. You use a common browser-based interface to seamlessly view all of your cameras' live images and archived video. The interface also features a built-in virtual joystick controls to operate your pan-tilt-zoom cameras remotely.

No matter how many different types of cameras and where they are geographically, they can all be viewed and administered remotely via your network or the Internet. Logon authentication and encryption ensure the security of your surveillance images.

Works with Any Camera

You can attach any type of camera to the videoNEXT system, from legacy CCTV cameras to the latest immersive technology capable of capturing a full 360-degree view. Existing analog video cameras can be integrated to provide the same interface and content-management tools as your digital IP cameras. Using secure wireless connections, you can put cameras virtually anywhere.



Use built-in virtual joystick to interactively control your pan-tilt-zoom (PTZ) cameras.

Runs on Any Brand Server

Because videoNEXT is a software solution based on an open-architecture hardware platform, it can reside on any brand of Intel-based server running Linux. This flexibility saves you money because you're not tied to a single vendor or proprietary equipment—you can use your favorite hardware vendors and competitively shop for commodity parts. Plus you leverage your existing IT investments and personnel and you only have to maintain one network. You can always add the latest new technology because the system is easily scalable and supports all applicable open standards. Our engineers can also adapt the videoNEXT software to your specific needs.

Easy to Use

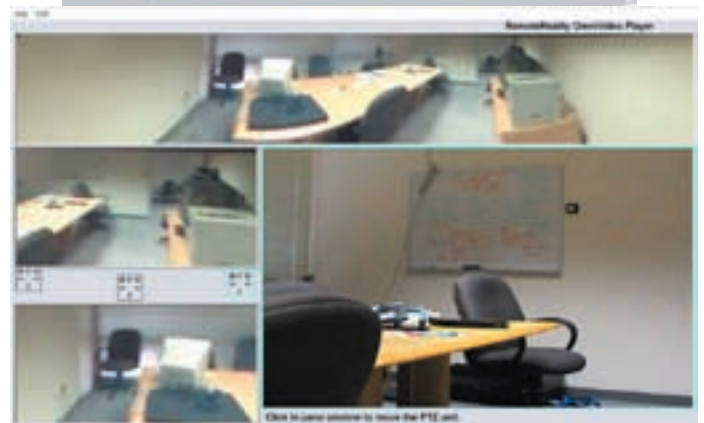
Even with all of these features, the best thing about the videoNEXT digital video content management solution is that it's easy for the user. The intuitive browser-based interface provides a consistent, seamless look and feel, so users don't need extensive training. Whether you use the online video tutorial, manuals, and built-in help files or you have us provide on-site training, we make it easy to get up to speed quickly. And our experienced engineers and support technicians are ready to help if you have a problem.

The Best IP Video Solution

So if you want to improve security using video surveillance, videoNEXT provides the simplest, most open, and most scalable solution on the market today. Call today for a free demonstration and consultation with one of our video surveillance experts.



Review recent and archived video at various playback speeds using virtual VCR.



Seamlessly access any type of camera, including the latest 360° immersive optics.



8320 Old Courthouse Road, 2nd Floor
Vienna, Virginia 22182
703.903.0227 main ■ 703.749.5326 fax
sales@videonext.com
www.videonext.com

SECURITY, INTEGRATION & SUPPORT SERVICES

The videoNEXT engineering, sales, and support team stands ready to help you implement IP-based surveillance solutions using videoNEXT digital video content management software. From strategic planning through installation and support, our experienced team members will ensure that your surveillance system meets your current needs and can grow with your future requirements. Choose from our complete range of services:

- **Security Planning/Design**—Our security engineers help government and corporate planners develop both long- and short-term strategies for implementing IP-based surveillance video systems
- **Installation/Configuration**—Our experienced on-site technicians install, configure, and integrate the necessary hardware and software to meet your requirements and ensure everything meets our strict quality assurance standards
- **Network Engineering**—For large government, military, or enterprise installations, our engineering team coordinates with facility personnel to carefully plan each aspect of the monitoring system
- **Custom Software**—In addition to our off-the-shelf software solutions, our software engineers can also develop customized network video management software
- **Broadband Video Relay**—Broadband relaying services are available to extend camera performance nationwide to over 900 concurrent users per system
- **Equipment Monitoring**—Our hardware monitoring service provides documented system monitoring and remote video archiving; custom monitoring service schedules include data/archive management and a documented four-point system check with remote administration



- **On-Site & Custom Training**—Our support staff offers training and documentation for all of our solutions
- **Service & Support**—All videoNEXT products and services come with standard maintenance support including issue tracker, email support, online FAQs, help documentation, service packs, and online user forums
- **24/7 Surveillance Video Monitoring**—Take the worry out of responding to emails or monitoring your surveillance system and let us monitor your security video using certified monitoring stations trained on videoNEXT technology
- **Integrator/Reseller Accounts**—Integrator accounts give you access to discounted camera and computer hardware, monthly newsletter, online quote management, co-branded marketing literature, and advanced administrator tools and features



8320 Old Courthouse Road, 2nd Floor
Vienna, Virginia 22182
703.903.0227 main ■ 703.749.5326 fax
sales@videonext.com
www.videonext.com

VIEW & CONTROL LIVE VIDEO

**Monitor your assets
live over the Internet**

**Drive your camera
with a virtual joystick**

Features:

- Control digital pan-tilt-zoom (PTZ) cameras via standard web browser
- Video server stores approximately one week of streaming video
- Automatic screen pop of motion or sensor events on remote PC workstations
- Wireless networking eliminates the need for data cables between server and camera
- Support for legacy analog and digital IP cameras in same platform
- Full-screen or multi-camera matrix display
- Voice-over-IP module for remote communications



Use built-in virtual joystick to zoom-in on high-value assets and/or suspicious activity.

Options:

- Wireless camera pods with 1, 2 or 3 cameras
- High-definition megapixel camera for photo-quality images
- 360 degree immersive camera for panoramic views
- “Dummy” cameras for theft and vandalism deterrence

Specifications:

- Resolution: 1024x768, 640x480, 320x240
- Frames per second: 1–30
- 5 levels of image compression

System Requirements:

- Server location must have standard AC power and Internet connection
- Camera requires standard AC power and mounting surface such as wall or heavy-duty pole
- For wireless networking camera location must have a clear line of site to the server location



8320 Old Courthouse Road, 2nd Floor
Vienna, Virginia 22182
703.903.0227 main ■ 703.749.5326 fax
sales@videonext.com
www.videonext.com

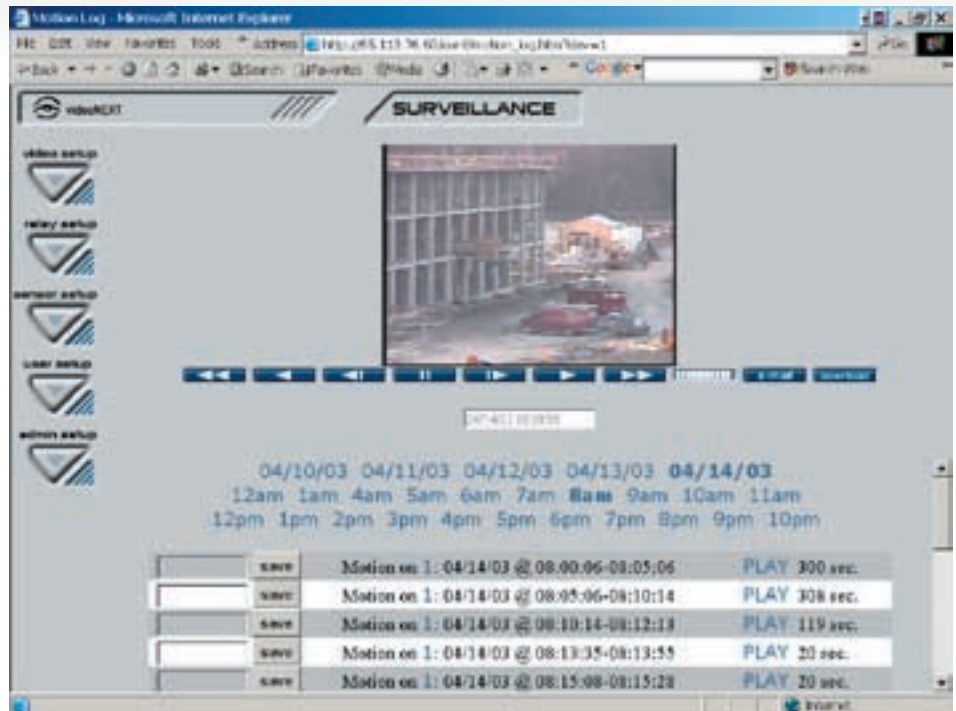
RECORD & STORE SURVEILLANCE VIDEO

**Save for weeks on
the server**

**Archive on the
network for years**

Features:

- Virtual VCR controls for fast forward, rewind, play, pause
- Multiple motion detection zones per camera
- Save important events on server by naming them
- Download stills or video clips to any windows computer
- Video/web server stores approximately one week of streaming video
- Automatically e-mail images on chosen intervals or upon events
- Integration with access control, biometric, and dry contact relay and sensor devices
- Support for wide variety of devices including digital cameras and megapixel resolutions



Software motion detection records only video with movement, then labels and archives files for later viewing.

Options:

- Extended record time on central management server or any Windows- or Unix-compatible network attached storage (NAS) device
- 1394 Firewire removable storage
- Fragile Digital Watermarking for non-repudiation and recovery of original JPEG or MPEG frames

Specifications:

- Resolution: 1024x768, 640x480, 320x240
- Frames per second: 1-30
- 5 levels of image compression



8320 Old Courthouse Road, 2nd Floor
Vienna, Virginia 22182
703.903.0227 main ■ 703.749.5326 fax
sales@videonext.com
www.videonext.com

NEXTcam SERVER

**Complete hardware/
software solution
provides out-of-the-
box convenience**

NEXTcams from videoNEXT provide a complete and scalable solution for all your video surveillance needs. View high-resolution, real-time images locally or from any Internet browser (with the required authorization). A single interface for all cameras makes operation simple and intuitive.

NEXTcams integrate with existing CCTV as well as next-generation IP surveillance cameras. The system uses standard network and camera interfaces, so you can add cameras anywhere along your existing data network. Plus you can upgrade the features and functionality of your existing surveillance system without displacing your current investment.



Features:

- **Web GUI for setup, configuration, and management**
- **View live and archived images from any web browser**
- **Motion detection alerts**
- **Generate alerts to pagers, email, telephones, PC workstations**
- **Supports analog cameras and new IP cameras**
- **Pan-tilt-zoom (PTZ) cameras for optimum coverage**
- **Define users & groups for access permission**
- **Integrated with biometric access control**
- **Remote control dry contact relays and sensors**
- **Embedded Unix O/S for mission-critical installations**

Applications

- Arenas & stadiums
- Casinos
- Campuses
- Commercial/office buildings
- Construction sites
- Convenience stores
- Correctional facilities
- Courthouses
- Day care centers
- Embassies
- Factories
- Financial institutions
- Hotels
- Hospitals
- Loading docks
- Marinas
- Military installations
- Multi-tenant properties
- Parking lots & garages
- Residential properties
- Restaurants
- Retail establishments
- Schools
- Traffic cameras
- Warehouses



8320 Old Courthouse Road, 2nd Floor
Vienna, Virginia 22182
703.903.0227 main ■ 703.749.5326 fax
sales@videonext.com
www.videonext.com

NEXTcam SERVER SPECIFICATIONS



Specifications

Processor:

- PIII/PIV
- 256MB RAM
- Embedded Linux OS

Formats:

- NTSC/PAL
- JPEG
- H.323
- G.711
- G.728

Weight:

- 20 lbs, excluding cameras, monitor, keyboard

Dimensions:

- Standard 1U 19" rack mount chassis
- Height 1 3/4"
- Width 17" + 2" rack mount ears
- Depth 21"

Power

- 110/220 VAC Switchable, 350W
- Optional redundant power, DC power

Network

- Dual (WAN+LAN) 10/100 auto-sense Ethernet

External Devices

- Two serial
- 4 USB

Operating Environment

- 40-105 F (5-40 C)
- 20-80% RHG Non-Condensing
- Indoor Only

Approvals

- EMC: This equipment complies with the requirements in part 15 subpart B of FCC Rules for Class A computing devices
- CE: EN 55022 Class B, EN55024
- CC: Class A
- Safety: EN 60950, UL, CSA, ADA Section 508

Model	Analog Cams	IP Cams
NEXTcam V1	1	3
NEXTcam V4	4	4
NEXTcam V8	0	8



Standard Features

Analog + IP video capture	Preserves legacy cams; supports latest IP-enabled cams
JPEG compression	Conserves bandwidth; provides five quality settings
Camera control	Remote Pan Tilt Zoom control for Sony and Pelco cams
Relays & sensors	Control door locks, lights, read status of devices
Audio telephony	Phone calls between PC workstations & NEXTcams
Access control	Interface to keypads, smart cards, biometric devices
Web GUI	100% browser-based for Internet Explorer, Netscape
Remote alerts	Status and event-based screen pops on PC workstations
Schedules	Calendar-defined recording, event handling
Open Linux platform	Non-proprietary hardware for mission-critical reliability



8320 Old Courthouse Road, 2nd Floor
 Vienna, Virginia 22182
 703.903.0227 main ■ 703.749.5326 fax
 sales@videonext.com
 www.videonext.com

WIRELESS CAMERA PODS

Self-contained pods make it easy to mount your cameras anywhere

NEXTcam wireless camera pods are an easy-to-install alternative to wired cameras. Each of these bundled solutions supports up to three fixed cameras and one pan-tilt-zoom (PTZ) camera, so they can be easily upgraded with additional cameras as your needs grow:

- **Wireless PTZ Pod**—includes PTZ dome camera
- **Wireless Dual Pod**—includes two fixed cameras
- **Wireless Single Pod**—includes one fixed camera

Cameras and pods can be located indoors or out. Simply mount the pod to a wall or pole and connect a single power cord to ordinary wall power. The wireless network securely transmits video back to the server. The basic antenna provides up to 1000 ft line-of-sight range back to the server. NEMA weatherproof enclosures with heaters and blowers defrost and defog the cameras in bad weather conditions.

Wireless PTZ Pod:

- Pan-tilt-zoom dome camera
- 1.0 lux low light capability
- 470 TVL resolution
- Hi Res Megapixel Cam option

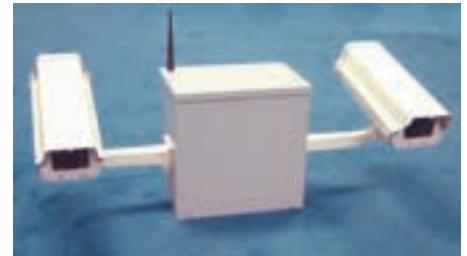
The Wireless PTZ Pod's dome camera can be remote-controlled with the virtual joystick interface to bring close-up views of different areas of your job site.



Wireless Dual Pod:

- Two fixed cameras
- 1.0 lux low light capability
- 470 TVL resolution
- Hi Res Megapixel Cam option

The Wireless Dual Pod has two fixed cameras that can be independently positioned to view different areas of your job site.



Wireless Single Pod:

- One fixed camera
- 1.0 lux low light capability
- 470 TVL resolution
- Optional dummy cameras

The Wireless Single Pod has a fixed camera for 24/7 coverage of a specific area of your job site.



8320 Old Courthouse Road, 2nd Floor
Vienna, Virginia 22182
703.903.0227 main ■ 703.749.5326 fax
sales@videonext.com
www.videonext.com

INDOOR ANALOG CAMERAS

Analog cameras require a coaxial (analog) cable connection to an IP encoder or videoNEXT server. The models shown here meet basic requirements for most common indoor applications, but many more cameras are available, including 900mhz wireless transmitting, hidden, and other styles and configurations. A wide variety of mounting hardware, decorative, protective, and hidden enclosures are also available.

JVC750

Fixed, indoor color digital CCD camera. 420 TVL resolution, 12VDC/24VAC operation. C-mount for lens (not included). Variety of focal lengths available. Best value indoor camera. SKU: vnxjif420



Sony EVID100

Highest quality indoor pan tilt zoom optics, Visca RS232 control format supports chaining, presets, auto-focus/ auto iris IR remote. SKU: vnxsed100



Sanyo Door Peephole Camera

Fits 22mm hole, 40-70mm depth. 36mm facia. Fisheye lens, bnc connector. 12VDC operation. SKU: vnxbdp001



Pelco Spectra

Ceiling dome, standard size for can light opening. Pan Tilt Zoom, Pelco RS485 control format, supports presets, choice of clear, mirrored, tinted dome. SKU: vnxpid055



8320 Old Courthouse Road, 2nd Floor
Vienna, Virginia 22182
703.903.0227 main ■ 703.749.5326 fax
sales@videonext.com
www.videonext.com

OUTDOOR ANALOG CAMERAS

Analog cameras require a coaxial (analog) cable connection to an IP encoder or videoNEXT server. The models shown here meet basic requirements for most common outdoor applications, but many others are available from Pelco, including armored, vandal resistant, submersible, and explosion-proof models. A wide variety of mounting hardware, decorative, protective, and hidden enclosures, as well as cameras from other manufacturers, are also available.

Pelco ICS300

Fixed, outdoor weatherproof/heated, variety of focal lengths, up to 420TVL resolution. Best value outdoor fixed camera. SKU: vnxp300



Pelco Spectra

Outdoor pan-tilt-zoom camera, pendant mount dome. Variety of focal lengths, available in low lux and IR, tinted, mirror, and clear domes. Heat and defrost options. SKU: vnxpsd010



Pelco Esprit

Outdoor pan-tilt-zoom camera, pedestal mount. High wind- and severe weather-resistant. Variety of focal lengths, low lux, and IR available. Heater/defroster. Premiere outdoor PTZ camera for demanding applications. SKU: vnxppe0200



8320 Old Courthouse Road, 2nd Floor
Vienna, Virginia 22182
703.903.0227 main ■ 703.749.5326 fax
sales@videonext.com
www.videonext.com

IP NETWORK CAMERAS

IP network cameras plug directly into your local area or wide area network using standard CAT5 cables. Models other than those shown are also available from Axis, including the 2420 infrared for low-light/night viewing, and the 2110, which is equivalent to 2100 (below) but has an auto-iris lens for outdoor use. Fixed and PTZ IP cameras are also available from Sony and Panasonic; an 802.11-accessible model is available from D-Link. Indoor and outdoor enclosures and mounting hardware are available for almost any application.

Axis 2100

Fixed camera, indoor only (due to lack of auto-iris lens), maximum 10fps @ 320x240, 4fps @ 640x480 resolution. Lowest cost. SKU: vnxai2100



Axis 2120

Fixed camera, indoor or outdoor (w/enclosure and auto-iris lens, not included), 30fps @ 320x640 resolution, 10fps @ 640x480 resolution. Best value IP camera. SKU:vnxai2120



Axis 2130

Pan-tilt-zoom camera, indoor or outdoor w/enclosure (not included), 30fps @ 320x240 resolution, 10fps @ 640x480 resolution. Sony optics. Best IP PTZ. SKU: vnxa12130



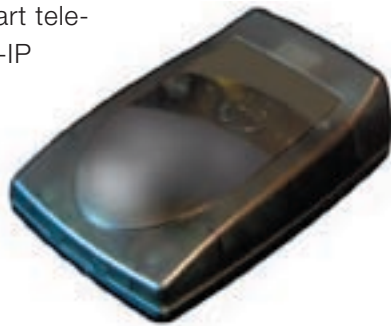
SOUND & CONTROL PERIPHERALS

Expand your videoNEXT surveillance system to include sound, telephony, access control, and/or hardware sensors with these optional peripherals.

Each NEXTcam server provides 2 DB9 Serial and 2 USB ports. The NEXTcam Peripheral Device Server (SKU: vnxud16) requires 1 USB port and provides an additional 16 DB9 serial ports and 4 USB ports. These can be used to connect any combination of the peripherals above, as well as pan-tilt-zoom cameras.

VoIP Telephony Module

Two-wire RJ11 loop-start telephone jack. Voice-over-IP allows two-way calling between NEXTcams and PC workstations or other H.323 compliant devices. Attaches via USB port. SKU: vnx-cip01



Audio I/O Module

Line-level mini phone jacks with amplifier and volume controls, D/A converters, and DSP chip for audio input/output. Attaches via USB port. SKU: vnxce030



Relay/Sensor Module

Dry contacts for 8 SPST relays and 4 optically isolated sensors to web-enable remote devices. Attaches via DB9 port. SKU: vnxasers84



Access Control Keypad

Micro terminal with numeric keypad, function keys, 6 user-programmable keys, and LCD display. Surface mount, 12VDC operation. Attaches via DB9 port. SKU: vnxtic250



8320 Old Courthouse Road, 2nd Floor
Vienna, Virginia 22182
703.903.0227 main ■ 703.749.5326 fax
sales@videonext.com
www.videonext.com

WHO IS videoNEXT?

VideoNEXT, a privately held company, has been providing cutting-edge IP-based video solutions since 1999. The company's first product was a universal videoconferencing solution capable of integrating all existing and emerging videoconferencing standards. This Linux-based video server is capable of interacting with all current video standards, including IP cameras and legacy CCTV and H.323 systems.

As a result of the increased emphasis on video security after the 9/11 terrorist attacks, videoNEXT modified its core technologies to manage IP-based video surveillance cameras. The company's previous experience with advanced videoconferencing solutions gave it a head start compared with other latecomers trying to capitalize on the rapidly expanding video surveillance market.

Our NEXtcam Server 3.0 digital video content management software is currently in its third major revision, making far more mature and robust than any other video surveillance solutions available today. This Linux-based non-proprietary system is based on open standards, so it can use any type of camera, its software can run on any brand server, and it can use any type of network-attached storage (NAS). This flexibility and extensibility have made it a favorite of major systems integrators and government contractors, including L3 Communications, Northrop Grumman, GTSI, and CDW.

Our rapidly growing list of high-visibility applications provides evidence that our turnkey solutions deliver the goods. We have recently won full-and-open competitions for surveillance systems for numerous private and public institutions, including:

- Metropolitan Police District of Columbia
- Clark Construction
- U.S. Department of Homeland Security
- U.S. Department of the Army, Army Research Laboratory
- City of Richmond Police Department, Richmond, VA
- Port of Seattle Sea-Tac Airport
- City of Washington, DC, Water and Sewer Authority

Contact videoNEXT today or visit us online for details on how we can help you install and manage a state-of-the-art video surveillance solution.



8320 Old Courthouse Road, 2nd Floor
Vienna, Virginia 22182
703.903.0227 main ■ 703.749.5326 fax
sales@videonext.com
www.videonext.com