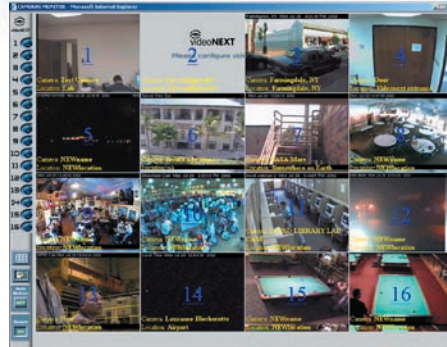


NEXTcam SERVER

Complete hardware/ software solution provides out-of-the- box convenience

NEXTcams from videoNEXT provide a complete and scalable solution for all your video surveillance needs. View high-resolution, real-time images locally or from any Internet browser (with the required authorization). A single interface for all cameras makes operation simple and intuitive.

NEXTcams integrate with existing CCTV as well as next-generation IP surveillance cameras. The system uses standard network and camera interfaces, so you can add cameras anywhere along your existing data network. Plus you can upgrade the features and functionality of your existing surveillance system without displacing your current investment.



Features:

- **Web GUI for setup, configuration, and management**
- **View live and archived images from any web browser**
- **Motion detection alerts**
- **Generate alerts to pagers, email, telephones, PC workstations**
- **Supports analog cameras and new IP cameras**
- **Pan-tilt-zoom (PTZ) cameras for optimum coverage**
- **Define users & groups for access permission**
- **Integrated with biometric access control**
- **Remote control dry contact relays and sensors**
- **Embedded Unix O/S for mission-critical installations**

Applications

- Arenas & stadiums
- Casinos
- Campuses
- Commercial/office buildings
- Construction sites
- Convenience stores
- Correctional facilities
- Courthouses
- Day care centers
- Embassies
- Factories
- Financial institutions
- Hotels
- Hospitals
- Loading docks
- Marinas
- Military installations
- Multi-tenant properties
- Parking lots & garages
- Residential properties
- Restaurants
- Retail establishments
- Schools
- Traffic cameras
- Warehouses



8320 Old Courthouse Road, 2nd Floor
Vienna, Virginia 22182
703.903.0227 main ■ 703.749.5326 fax
sales@videonext.com
www.videonext.com

NEXTcam SERVER SPECIFICATIONS



Specifications

Processor:

- PIII/PIV
- 256MB RAM
- Embedded Linux OS

Formats:

- NTSC/PAL
- JPEG
- H.323
- G.711
- G.728

Weight:

- 20 lbs, excluding cameras, monitor, keyboard

Dimensions:

- Standard 1U 19" rack mount chassis
- Height 1 3/4"
- Width 17" + 2" rack mount ears
- Depth 21"

Power

- 110/220 VAC Switchable, 350W
- Optional redundant power, DC power

Network

- Dual (WAN+LAN) 10/100 auto-sense Ethernet

External Devices

- Two serial
- 4 USB

Operating Environment

- 40-105 F (5-40 C)
- 20-80% RHG Non-Condensing
- Indoor Only

Approvals

- EMC: This equipment complies with the requirements in part 15 subpart B of FCC Rules for Class A computing devices
- CE: EN 55022 Class B, EN55024
- CC: Class A
- Safety: EN 60950, UL, CSA, ADA Section 508

Model	Analog Cams	IP Cams
NEXTcam V1	1	3
NEXTcam V4	4	4
NEXTcam V8	0	8



Standard Features

Analog + IP video capture	Preserves legacy cams; supports latest IP-enabled cams
JPEG compression	Conserves bandwidth; provides five quality settings
Camera control	Remote Pan Tilt Zoom control for Sony and Pelco cams
Relays & sensors	Control door locks, lights, read status of devices
Audio telephony	Phone calls between PC workstations & NEXTcams
Access control	Interface to keypads, smart cards, biometric devices
Web GUI	100% browser-based for Internet Explorer, Netscape
Remote alerts	Status and event-based screen pops on PC workstations
Schedules	Calendar-defined recording, event handling
Open Linux platform	Non-proprietary hardware for mission-critical reliability



8320 Old Courthouse Road, 2nd Floor
 Vienna, Virginia 22182
 703.903.0227 main ■ 703.749.5326 fax
sales@videonext.com
www.videonext.com